

GUANANA

VISTA



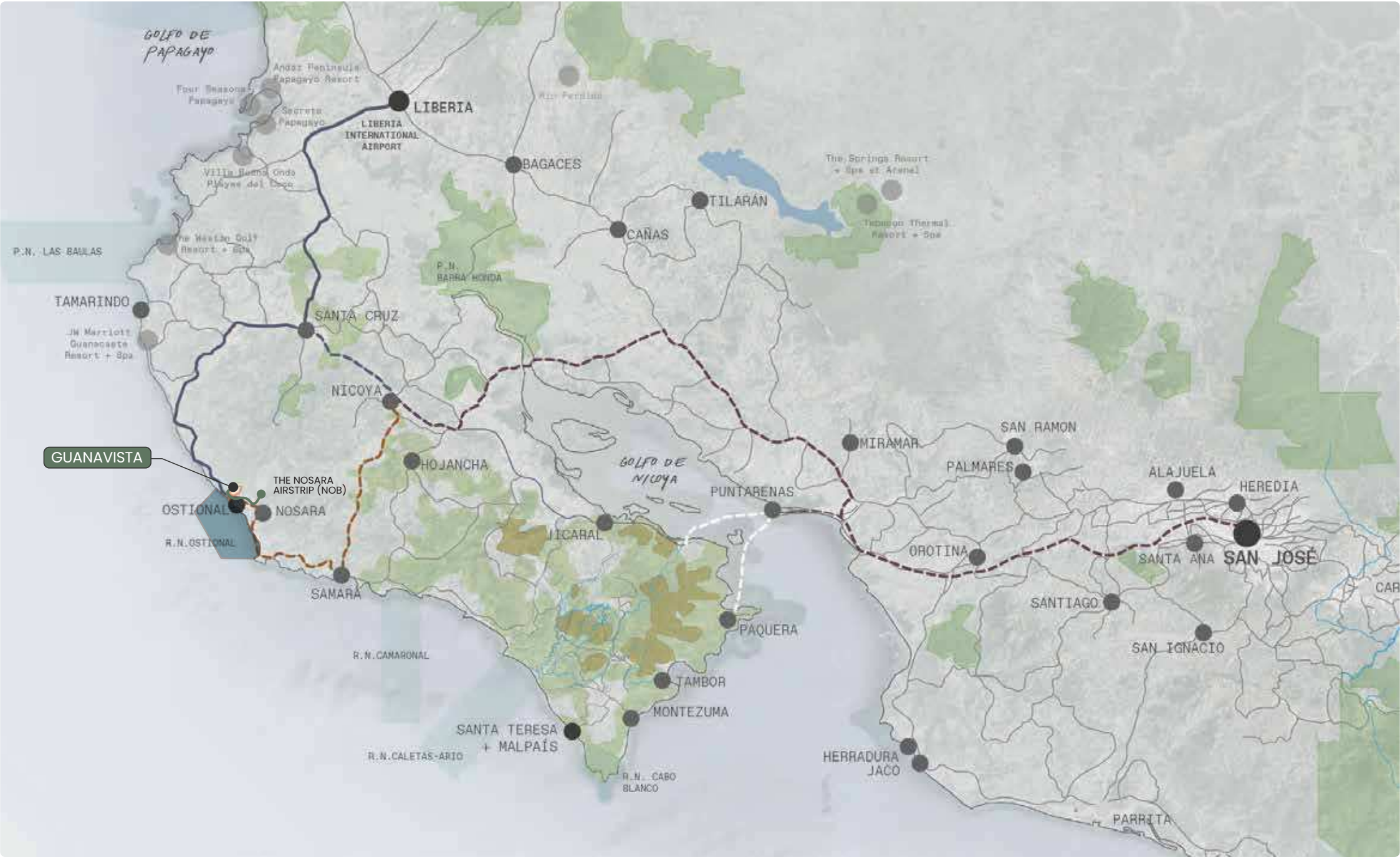
S O *f* Í A

SPHERA

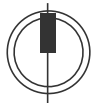
VIDA
MASTERPLANNING
+ DESIGN



Context Map

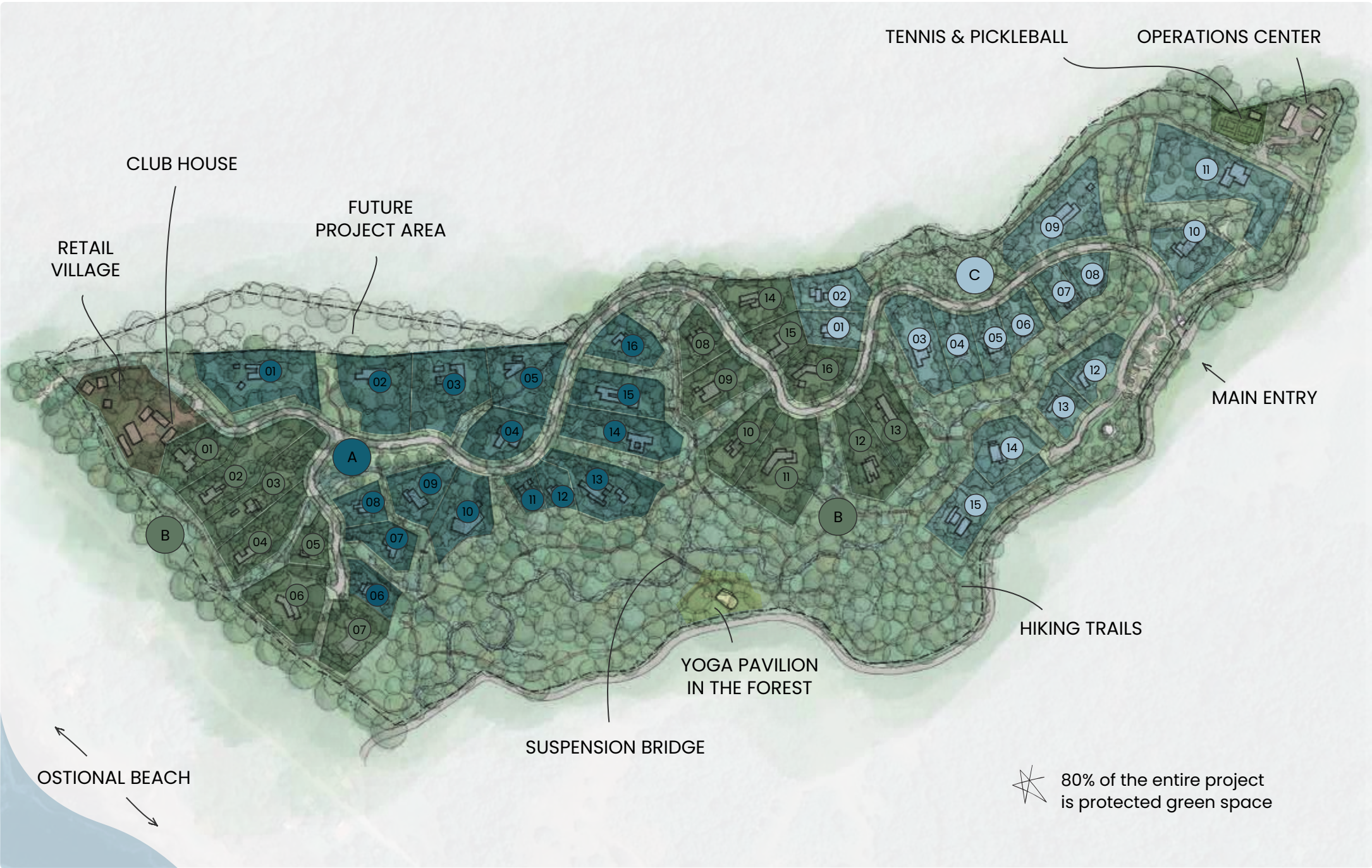


NICOYA PENINSULA, COSTA RICA



Development Program

GUANAVISTA 100% SCHEMATIC MASTERPLAN



PRIVATE LOTS			
PHASE A		PHASE B	
Lot	Area (m ²)	Lot	Area (m ²)
A01	4456	B01	2264
A02	3764	B02	3485
A03	4116	B03	3053
A04	2311	B04	2567
A05	3367	B05	1110
A06	1290	B06	3349
A07	1570	B07	2545
A08	1201	B08	1654
A09	2153	B09	2411
A10	2651	B10	2368
A11	825	B11	4500
A12	971	B12	2860
A13	3469	B13	2741
A14	3121	B14	2147
A15	2630	B15	1416
A16	1902	B16	2288

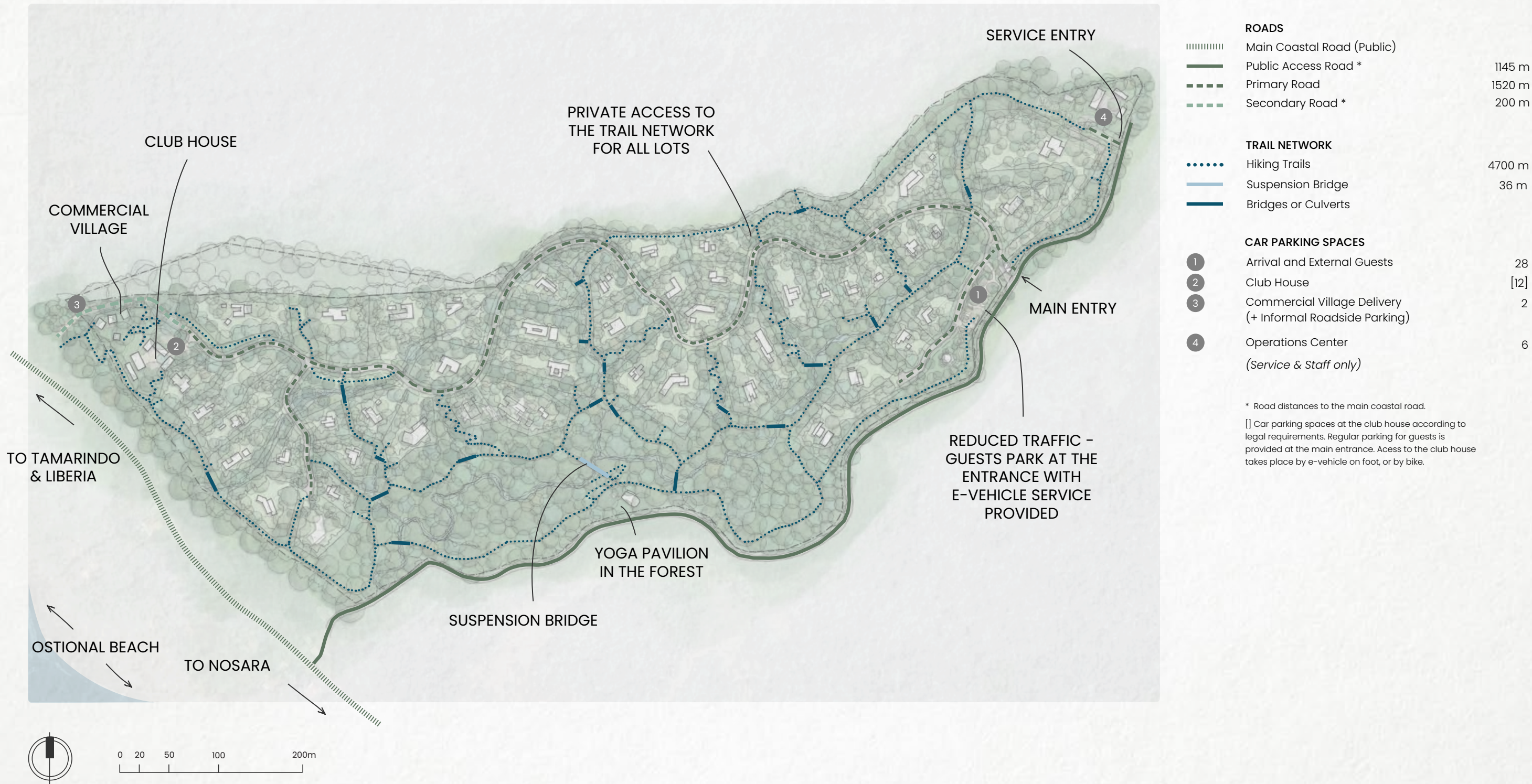
PHASE C			
Lot	Area (m ²)	Lot	Area (m ²)
C01	1538	C09	3991
C02	1971	C10	2338
C03	2817	C11	6121
C04	1831	C12	1673
C05	1454	C13	1351
C06	1287	C14	2372
C07	1083	C15	3134
C08	1195		

TOTAL LOT NUMBER		47
TOTAL LOT AREA		114,711 m ²
COMMON AREAS		AREA
Retail Village and ClubHouse		5331 m ²
Forest Pavilion		2403 m ²
Operations Center		3055 m ²
Tennis/Pickleball		1435 m ²
Roads & Parking		28,010 m ²
Interconnected Green Spaces		117,864 m ²
TOTAL LAND SIZE		272,809 m ²

43% NATURAL FOREST

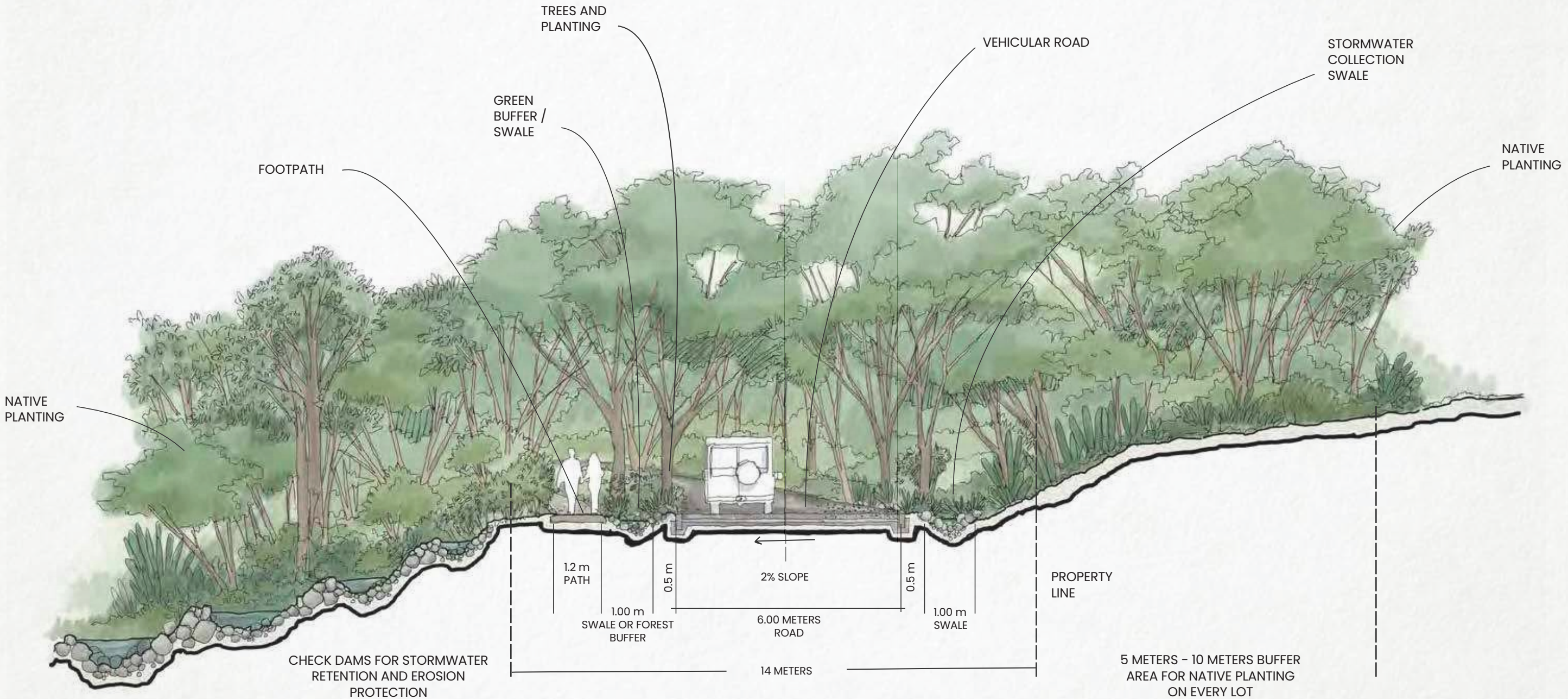
Circulation Diagram

GUANAVISTA 100% SCHEMATIC MASTERPLAN



Road and Stormwater Protection

ILLUSTRATIVE SECTION





Ostional Beach is also an amazing surf destination — known for its consistent surf conditions, perfect waves, and beautiful scenery. View from the existing residence on the property.

Ostional Wildlife Refuge

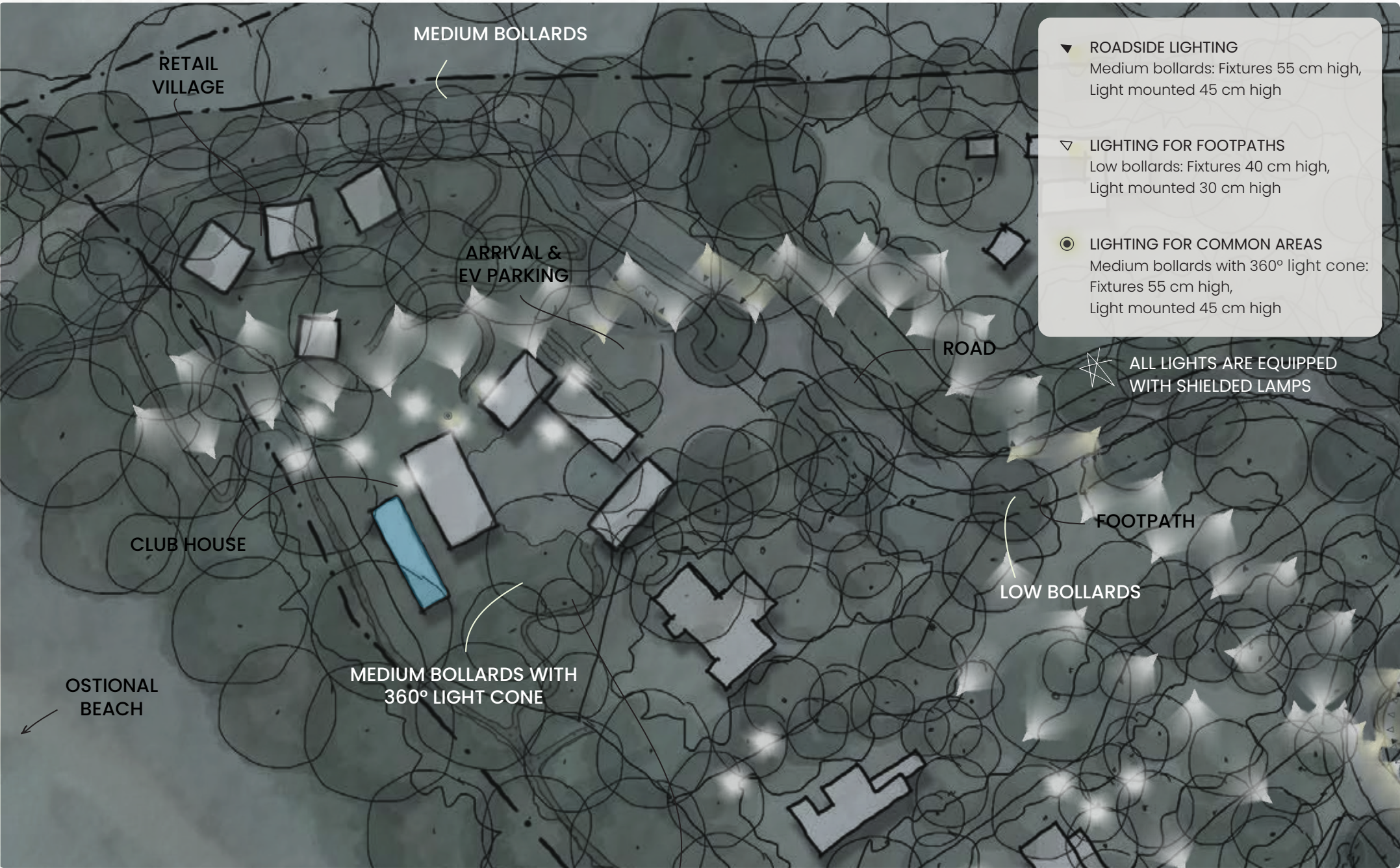
ON THE BEACHES OF OSTIONAL, NOSARA, AND GUIONES



The Ostional Wildlife Refuge is the second most crucial site globally for protecting and nesting olive ridley sea turtles. Established in 1984, it experiences year-round nesting, with peak activity during the rainy season, particularly from September to November during spectacular "arribadas." Stretching 15 km along the shoreline, the refuge buffers against coastal erosion and protects bird colonies in the inland estuaries and mangrove swamps, playing a vital role in conserving marine biodiversity.

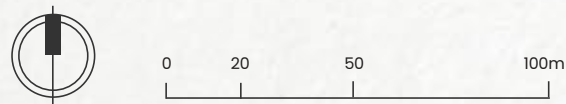
Schematic Level Lighting Plan

GUANAVISTA 100% SCHEMATIC MASTERPLAN



A LIGHTING DESIGN THAT SUPPORTS TURTLE PROTECTION

Due to our privileged location by the Ostional Wildlife Refuge, Guanavista is committed to minimizing disruption to nesting activities. In collaboration with local biologists, we have designed the project to utilize low fixtures with shielded light sources, reducing impact on turtles. Acceptable lamps emit amber-colored light with long wavelengths, supporting nesting while blending seamlessly with the forest's bark.

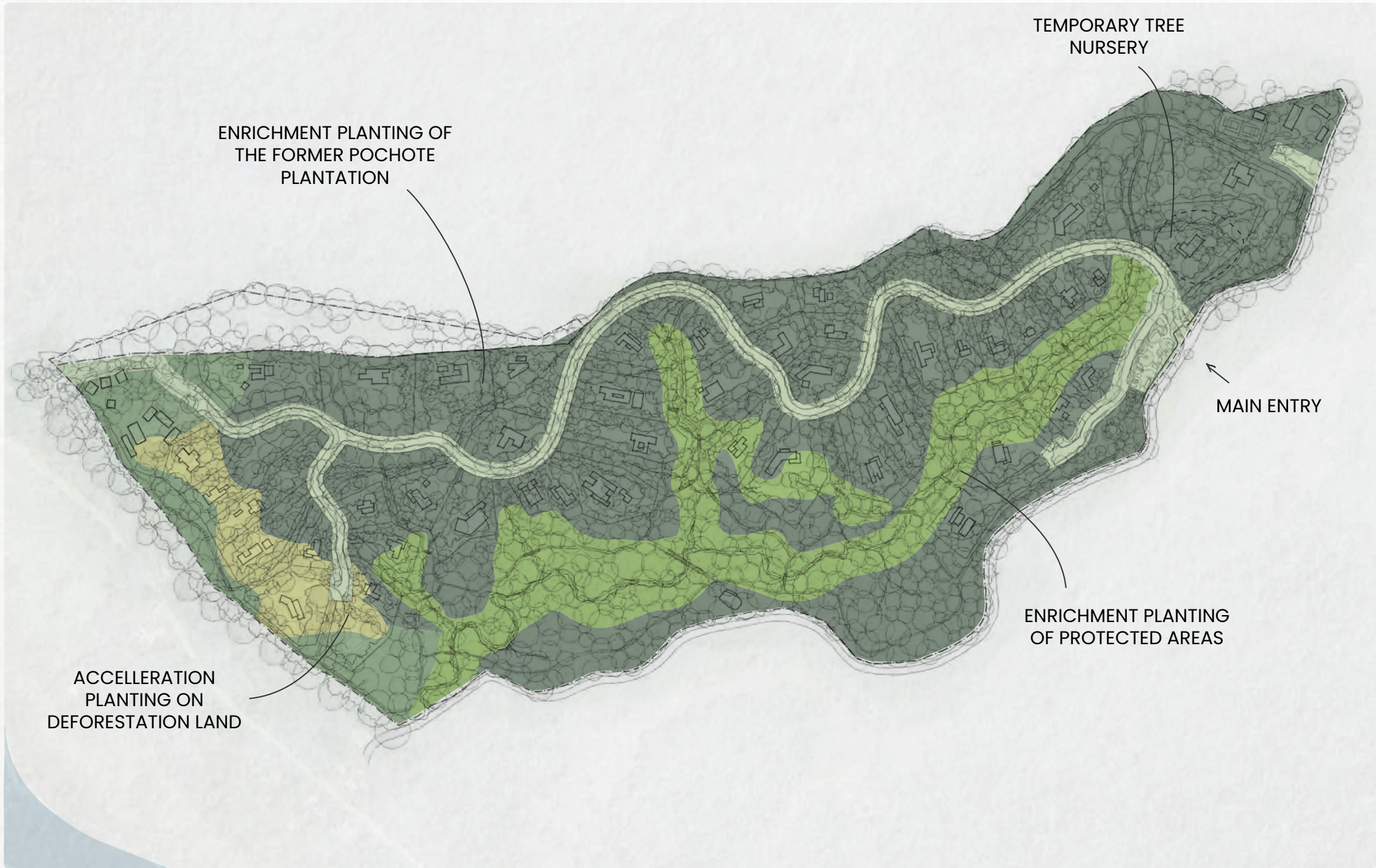




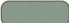

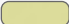
BOLLARDS WITH 360° LIGHT CONES HIGHLIGHT
SELECTED MEETING SPACES AT NIGHT

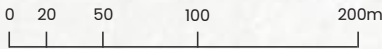
BOLLARDS WITH LOW HEIGHT FOR PATHWAYS

Reforestation

GUANAVISTA 100% SCHEMATIC MASTERPLAN



FOREST ZONES		
	Secondary Forest	19.1%
	Charral Woodlands	6.1%
	Old Pochote Plantation	61.1%
	Future Roadside Forest	9.2%
	Deforested Open Land	4.5%





Club House Design by LOOP

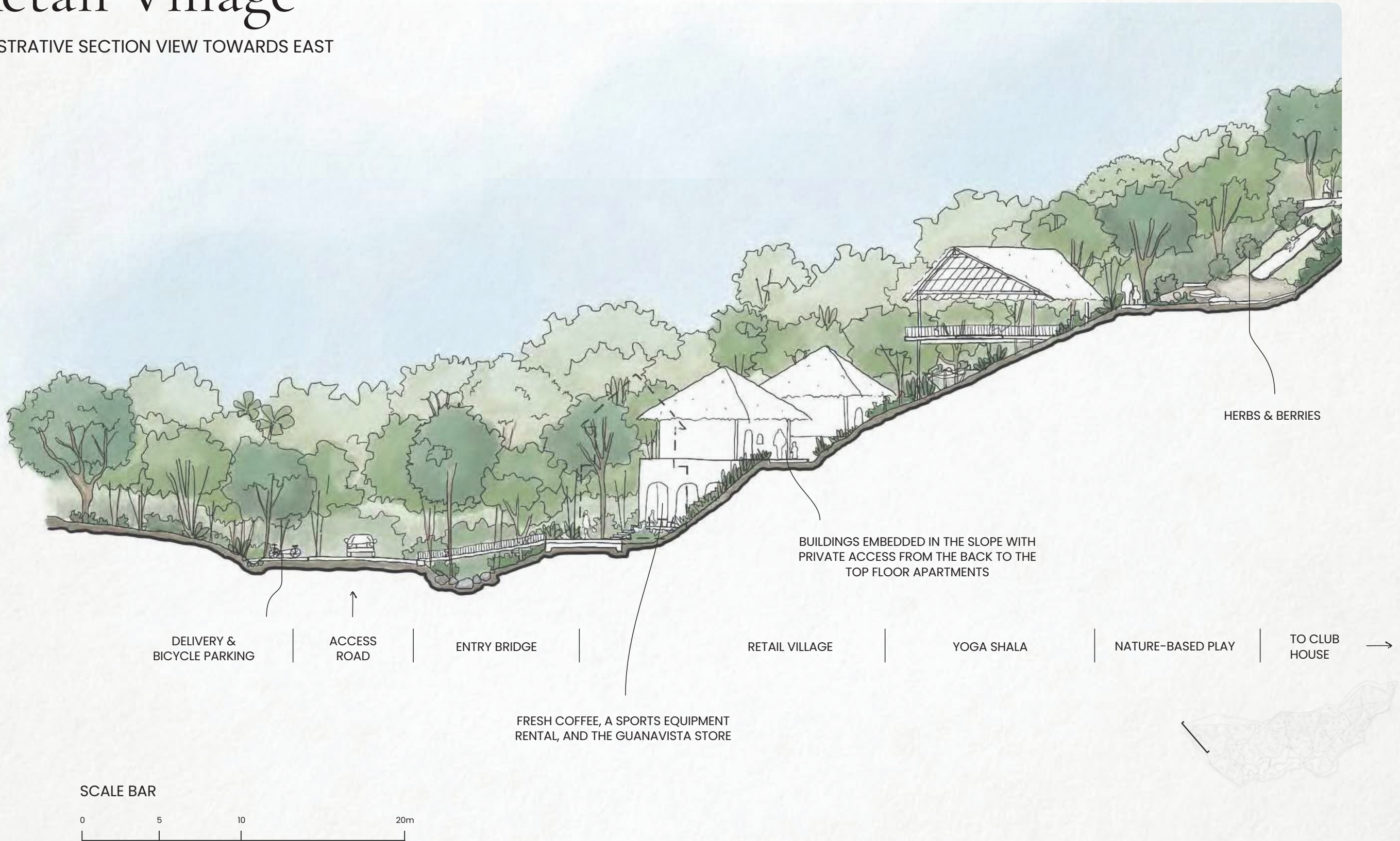
Club House

ILLUSTRATIVE SECTION VIEW TOWARDS EAST



Retail Village

ILLUSTRATIVE SECTION VIEW TOWARDS EAST







Look & Feel

CREATIVE DIRECTION

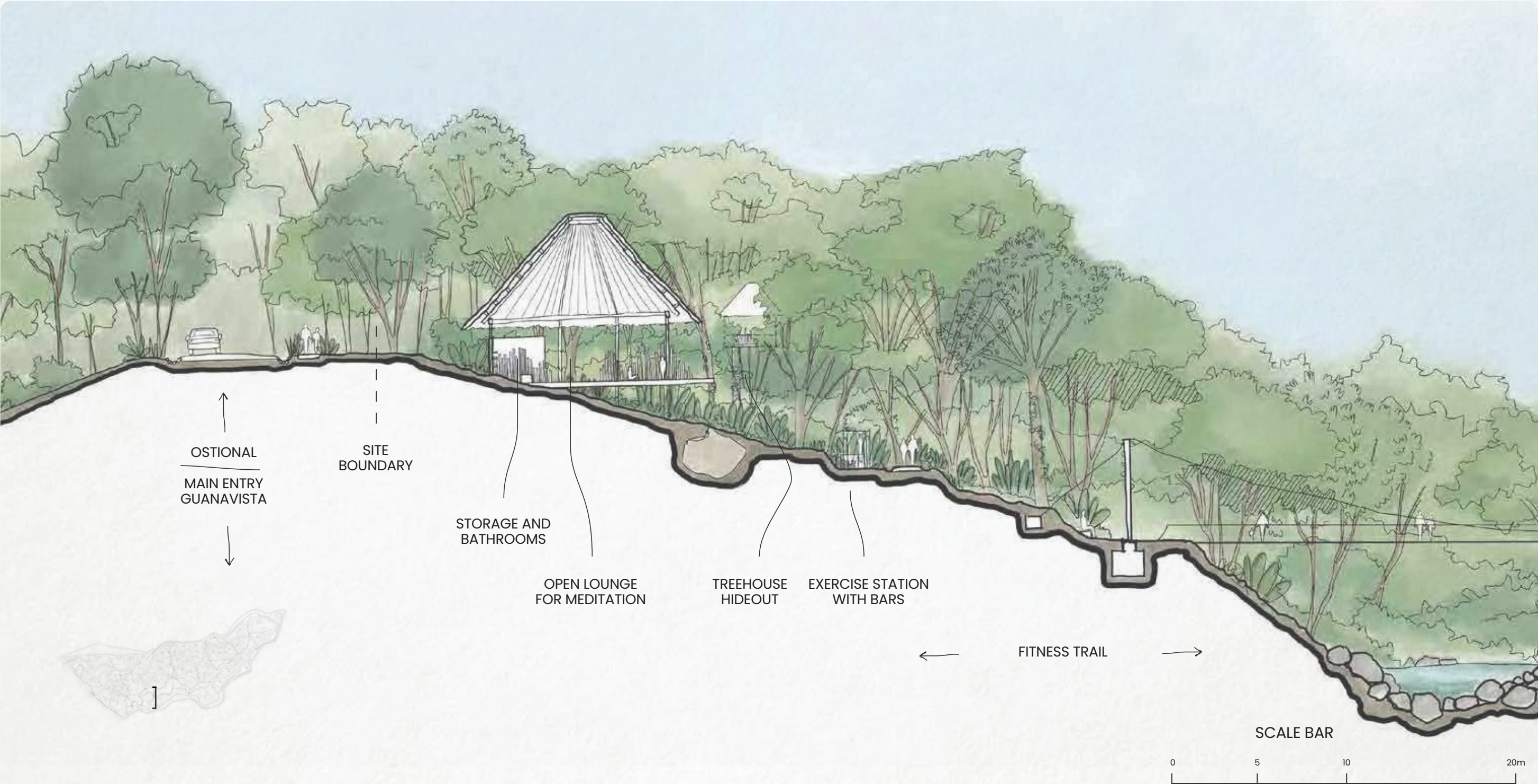






Forest Pavilion

ILLUSTRATIVE SECTION VIEW TOWARDS WEST



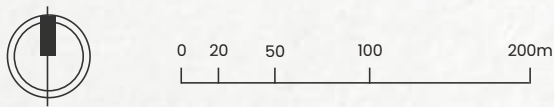
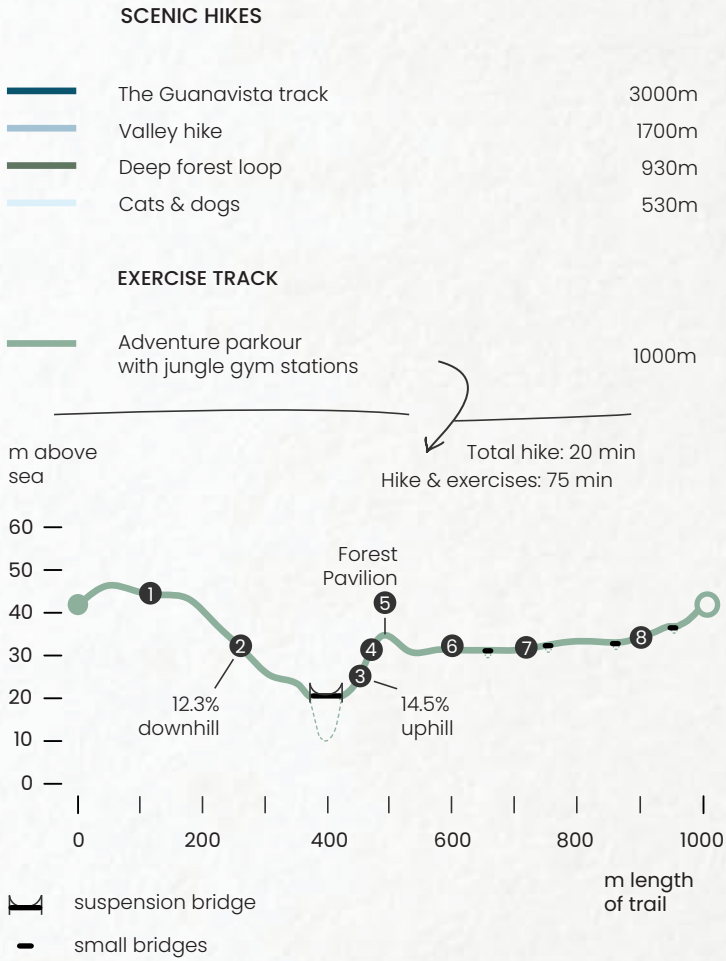
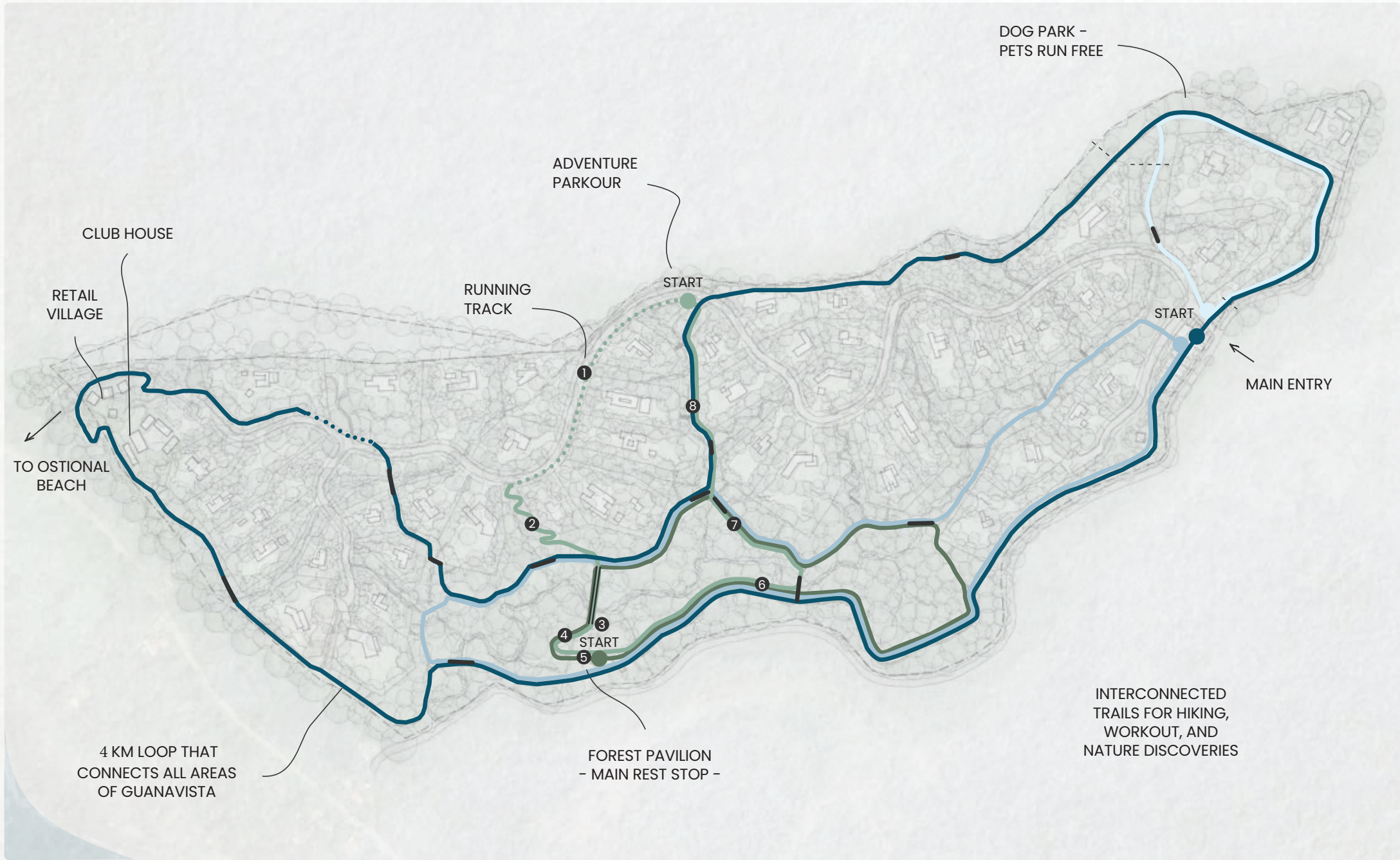
Forest Pavilion

CONTEMPLATION WITH VIEWS



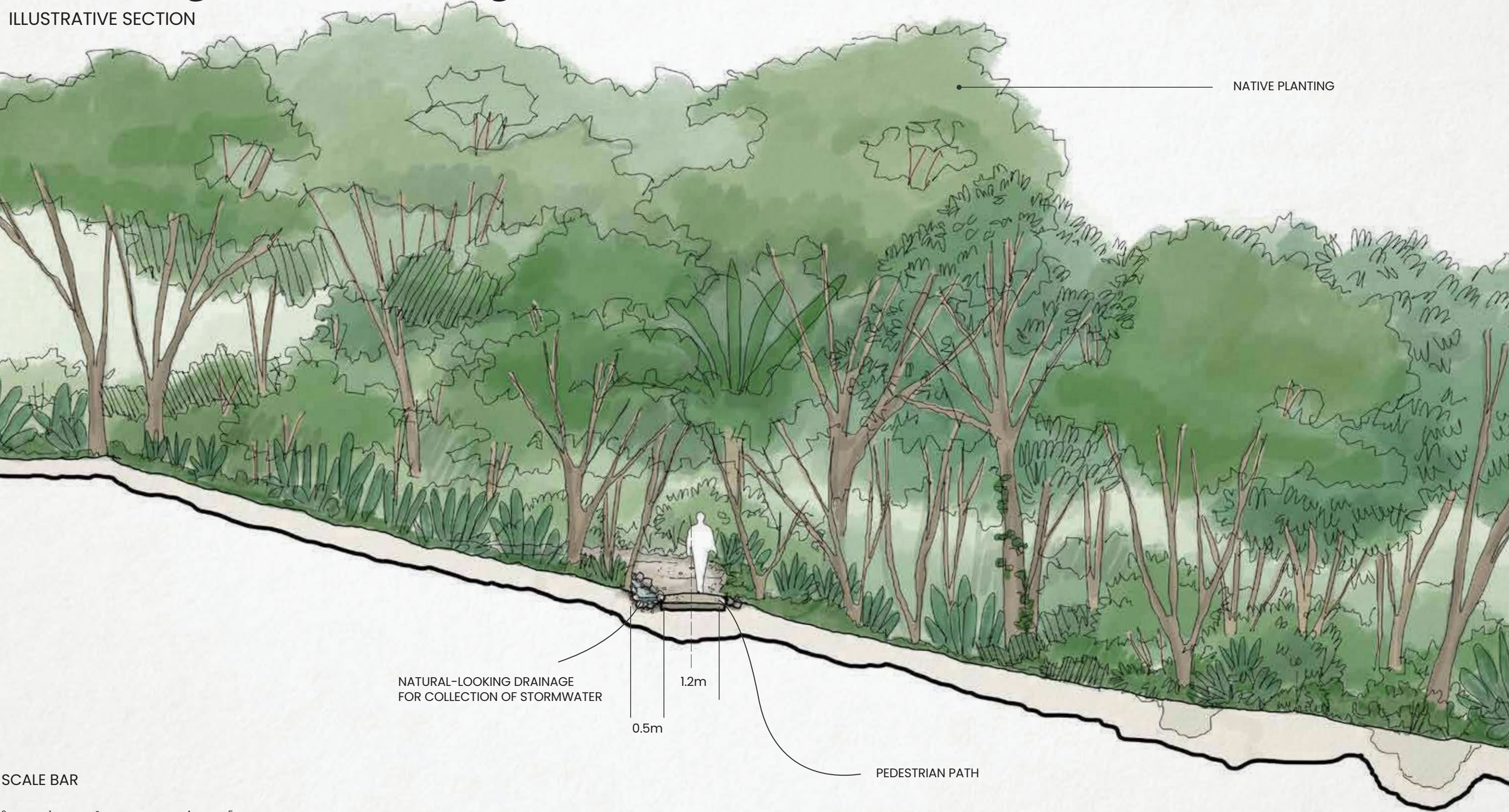
Circular Forest Trails

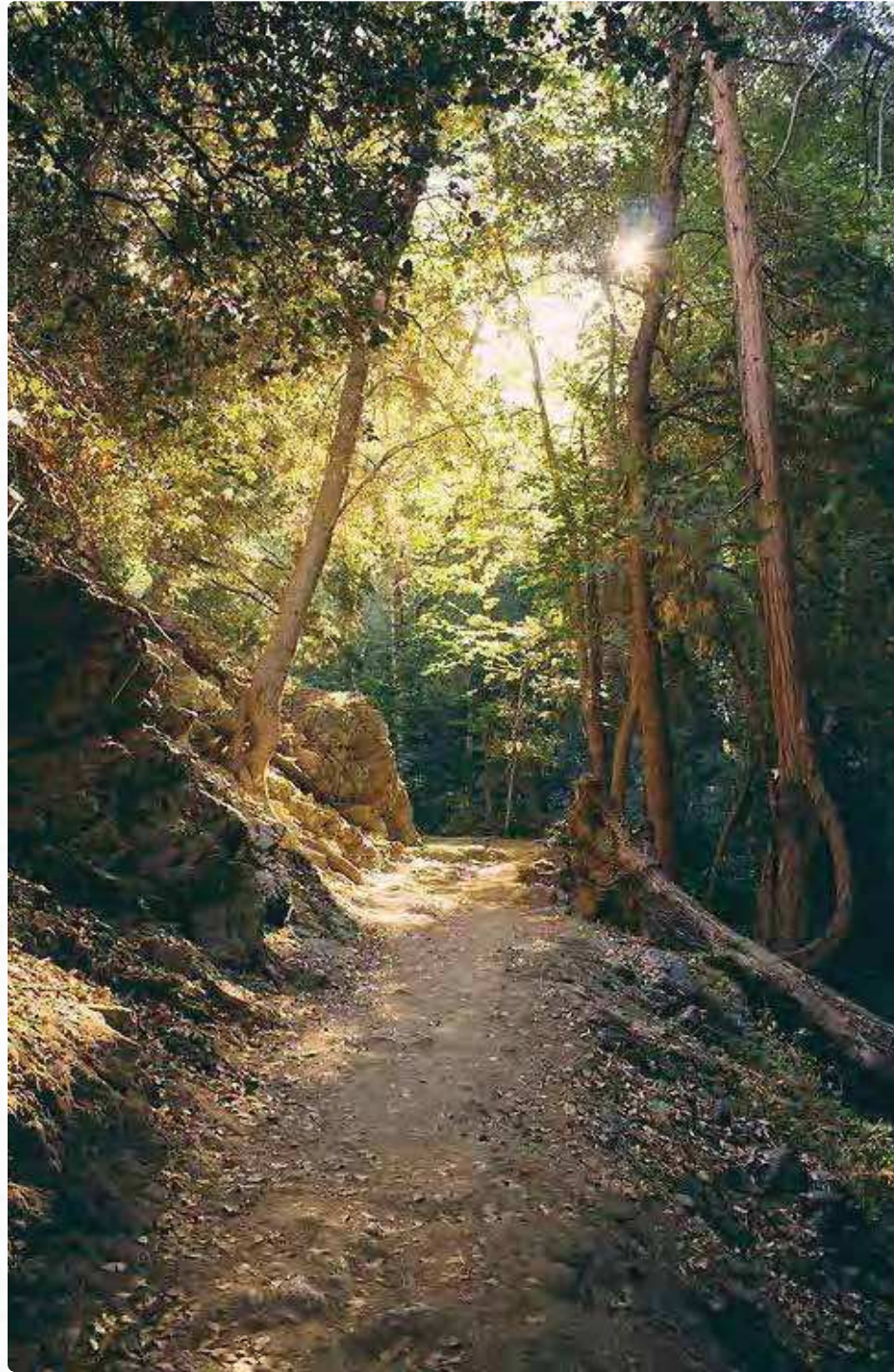
GUANAVISTA 70% SCHEMATIC MASTERPLAN



Walking and Hiking Trails

ILLUSTRATIVE SECTION





FOREST TRAILS CONNECT THE HOMES WITH
THE COMMON SPACES



Get in Touch

hola@guanavista.com

www.guanavista.com

[guanavista_cr](#)