



FOR SALE

150 Oakwood Road
WOLFEBORO, NEW HAMPSHIRE

THE DOW GROUP

Along the shore of Lake
Winnepesaukee in Wolfeboro, NH

3 BEDS

3 BATHS

2,594 SQFT

THEDOWGROUP.COM



Level lot, quiet cove and prime location make this the perfect
getaway on

Lake Winnepesaukee



Welcome to your new home!

Along the shore of Lake Winnepesaukee in Wolfeboro Bay step inside this 3 bedroom 2.5 bath home to be greeted by three levels of living space, with an open floor plan that seamlessly blends the kitchen, dining, and living areas, creating an inviting space for both relaxation and entertainment. The floor-to-ceiling windows throughout the home ensure that the beauty of Lake Winnepesaukee is never out of sight. The lower level offers direct access to the lake, inviting on lakeside adventures with ease. The walkout basement adds another dimension to this magnificent home, with its own charm and versatility. Step outside onto the expansive deck that extends from the home, offering a perfect vantage point to immerse yourself in the sights and sounds of lakefront living.

Boating enthusiasts will delight in the two docks that complement the property ready to be enjoyed at a moment's notice. Spend your days cruising the lake, fishing, or simply soaking up the sun on the water—every moment is an opportunity to embrace the waterfront lifestyle. In addition to the main property, an additional lot with a garage offers ample space for storage or the opportunity to expand and customize your lakeside retreat. Enhance your lifestyle and elevate your everyday experiences. Living in this waterfront paradise is more than just owning a home—it's about embracing a lifestyle of relaxation, adventure, and natural beauty.



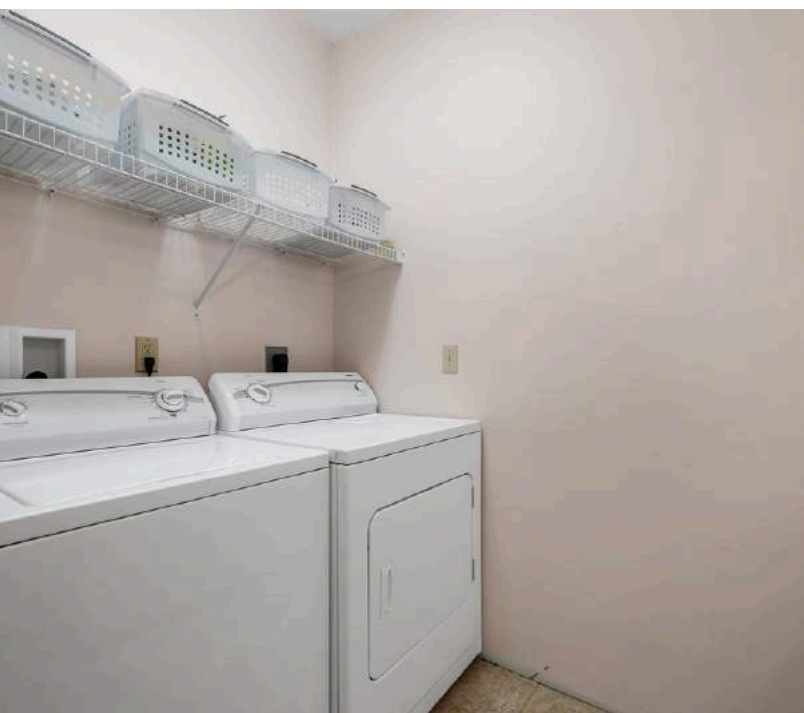
LIVING ROOM



DINING AREA



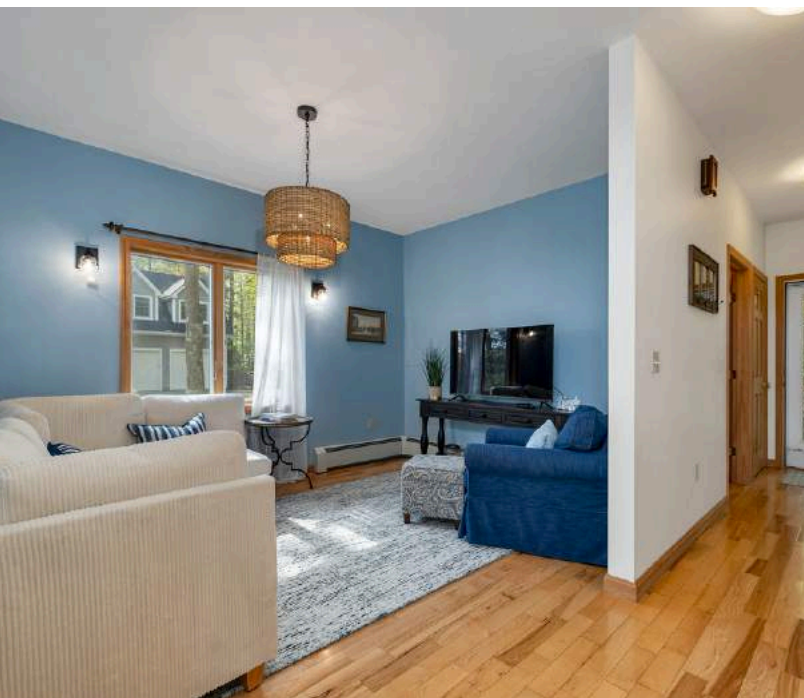
KITCHEN



BATHROOM W/
LAUNDRY AREA



FAMILY AREA



BATHROOM







WALK-IN-CLOSET



BATHROOM

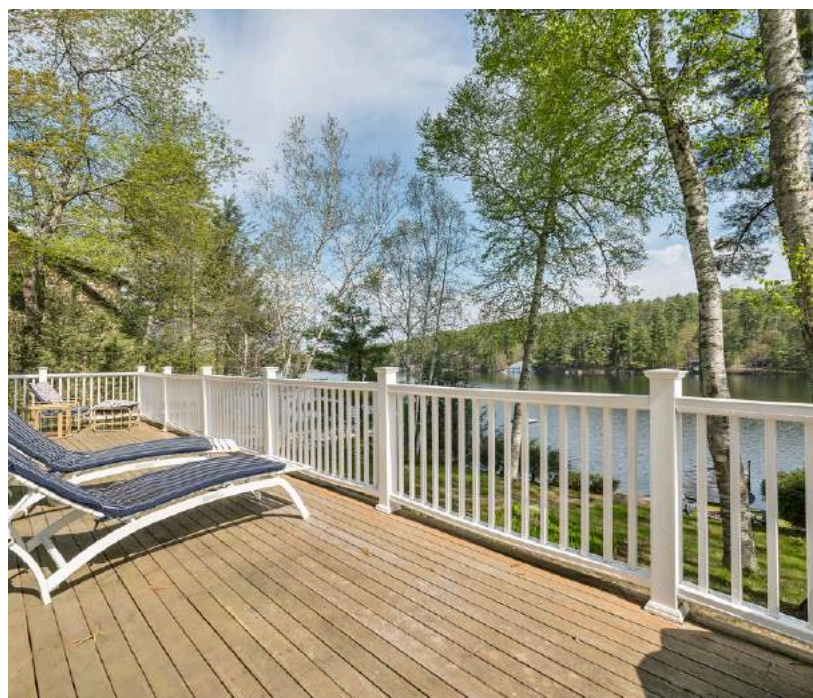


3RD BEDROOM





DECK



PATIO

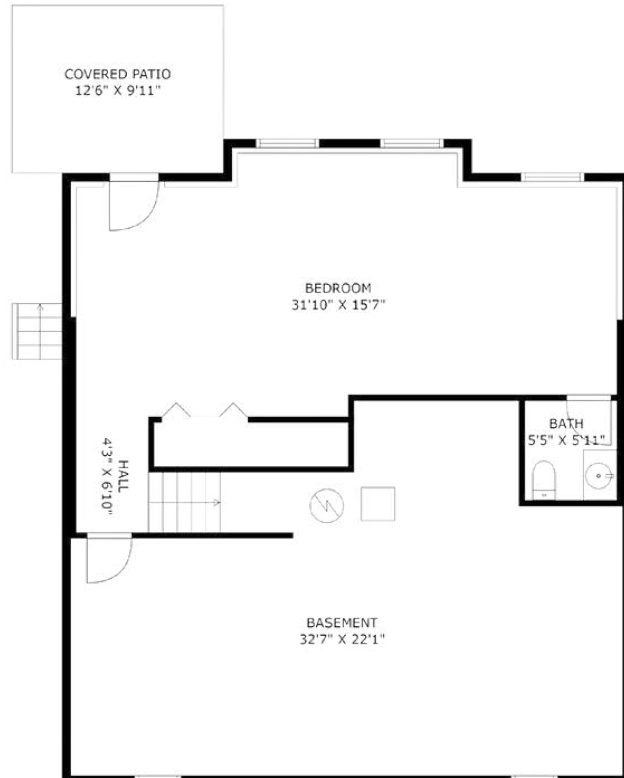


EXTERIOR

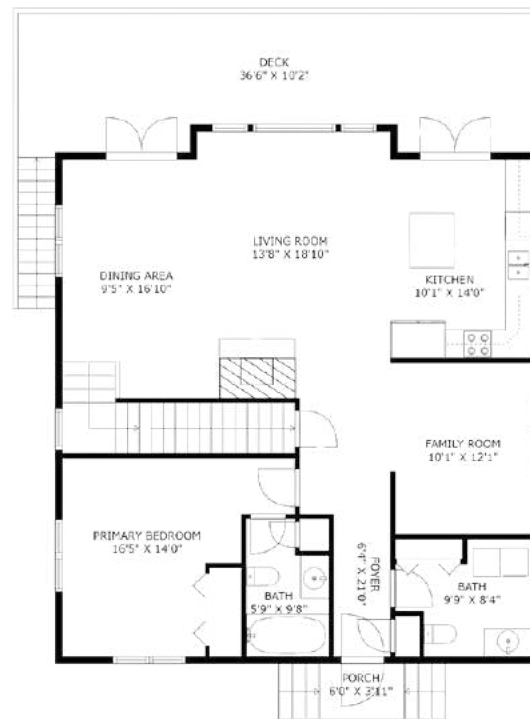


Floorplan: Main House Level 2 & Basement

BASEMENT

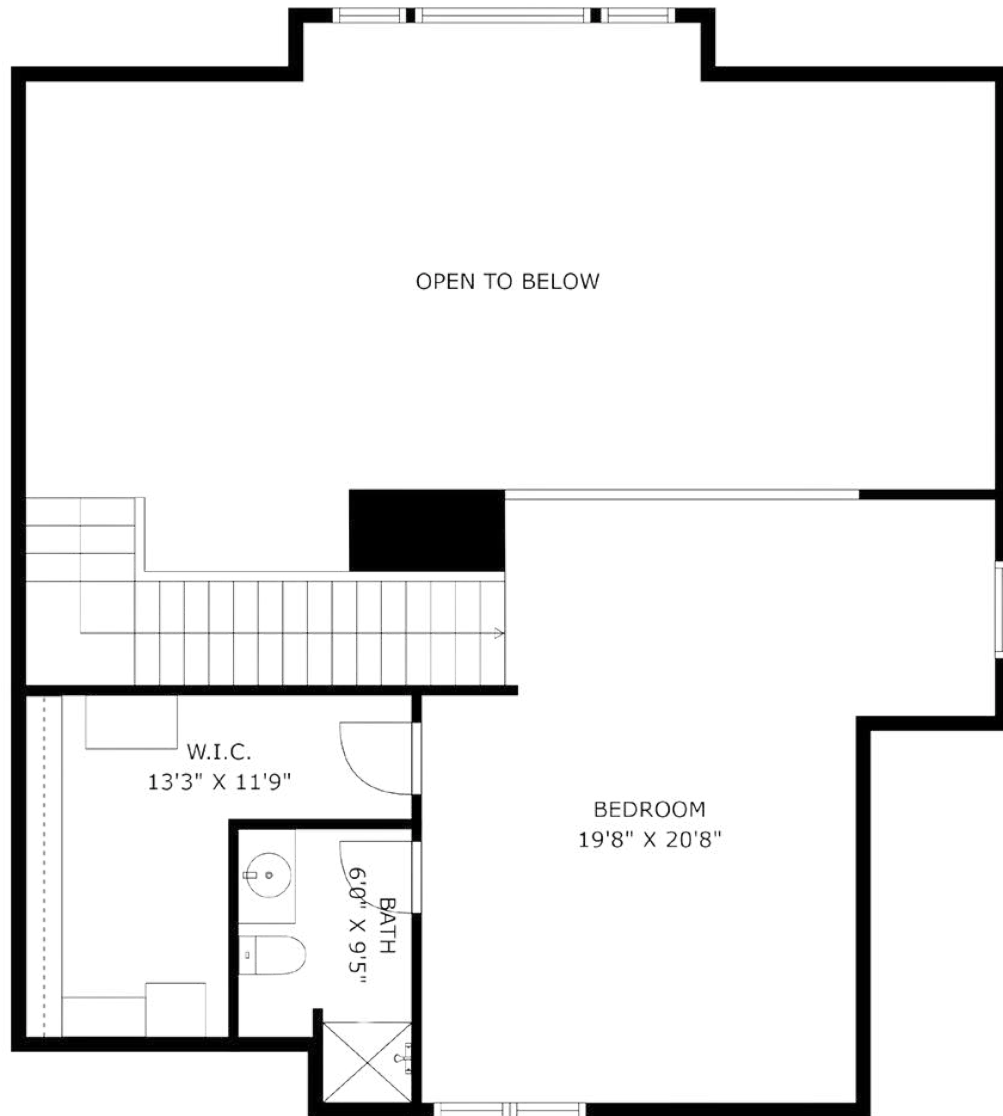


LEVEL 2



Floorplan: Main House Level 3

LEVEL 3





FOR SALE OFFERED AT \$2,600,000

150 Oakwood Road Wolfeboro, NH 03894

Along the shore of Lake Winnepesaukee in Wolfeboro Bay step inside this 3 bedroom 2.5 bath home to be greeted by three levels of living space, with an open floor plan that seamlessly blends the kitchen, dining, and living areas, creating an inviting space for both relaxation and entertainment.

- ✓ 3bedroom 2.5 bath open floor plan
- ✓ Wolfeboro, 100ft' Winnepesaukee waterfront, sandy bottom
- ✓ 2- 20' docks
- ✓ .33 acres combine with map 259 lot 66 of 1.2 acres across the street with 1 car garage.

Broker/agent does not guarantee the accuracy of square-footage, lot size, or other information concerning the condition or features of property provided by the seller or obtained from public records or other sources. Buyers are advised to independently verify the accuracy of all information.



SAYRE BUOTE

The Dow Group

(603) 709-4565

sayre@thedowgroup.com

At the Dow Group, our agents are here to guide you through your real estate process. Whether you're buying, selling, investing, or looking towards luxury properties, the Dow Group is here. Our in-depth knowledge of the local real estate market is unmatched, and our expert ability to deliver results is shown through our hard work and dedication to your satisfaction.

THEDOWGROUP.COM

POWERED BY
PLACE

kw COASTAL AND
LAKES & MOUNTAINS
KELLERWILLIAMS. REALTY