

A photograph of a log cabin house with a stone walkway and garden. The house is made of light-colored logs and has a dark roof. The front porch has a wooden railing and a central door with a transom window. There are arched windows on either side of the door. The walkway is made of large, flat stones and leads to the porch. The garden is filled with green plants and flowers.

FOR SALE

10 & 19 Abnaki Lane  
MOULTONBOROUGH, NH 03254

THE **DOW** GROUP

Welcome to  
Moose Manor!

6 BEDS

5 BATHS

5,350 SQFT

THEDOWGROUP.COM



THE DOW GROUP



A private, luxury log home estate  
nestled in the foothills of the



*Ossipee Mountains*

THEDOWGROUP.COM





19 ABNAKI  
LANE  
MAIN HOME

# Welcome to your new home!

Welcome to Moose Manor. A private luxury log home estate, located in low-tax Moultonborough, nestled in the foothills of the Ossipee Mountains, on over 8 acres of land. The property consists of two separate lots, each with just over 4 acres of land. Three separate buildings: 19 Abnaki Lane, the main log home is a raised ranch for easy first-floor living. Open concept kitchen complete with Viking appliances, three-season porch, office, full walkout lower level with additional living room and two more ensuites. Next is a detached garage with bonus space ready to be finished above.

10 Abnaki lane, a guest house with an additional 2 bedrooms, sits above an oversized garage with 2 - 16' garage bays. The property is both professionally staged and furnished by Home Comfort and professionally landscaped. This property comes turn-key, all you need are your clothes to start enjoying all NH Lakes Region has to offer. All furnishings, decor, signed and numbered artwork, golf cart, and fishing boat/trailer to remain with the property (small personal item exclusion list to be provided). Car enthusiasts take note, this property is less than 20 minutes from the Tamworth Motor Club and can easily house 7+ cars.









KITCHEN



DINING AREA





HOME OFFICE OR  
4TH ENSUITE  
BEDROOM



3-SEASON PORCH







LOWER LEVEL



BEDROOMS







REAR OF 19  
ABNAKI LANE



19 ABNAKI LANE  
DETACHED GARAGE







10 ABNAKI LANE



LIVING ROOM /  
KITCHEN





GUEST SUITE



BUNK ROOM





GARAGE SPACES



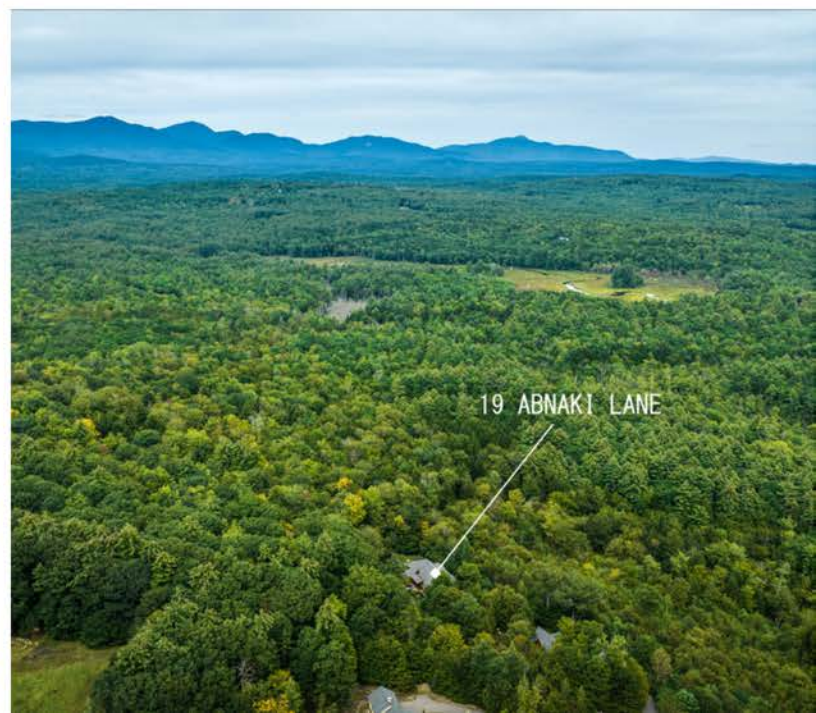
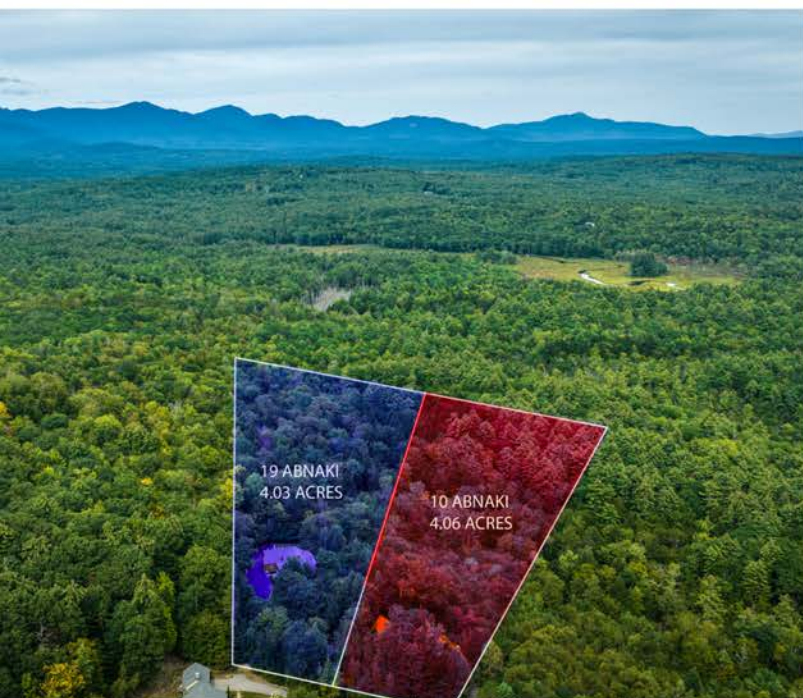


EXTERIOR PHOTOS





AERIAL PHOTOS







## **ELEVATE YOUR DRIVING EXPERIENCE**

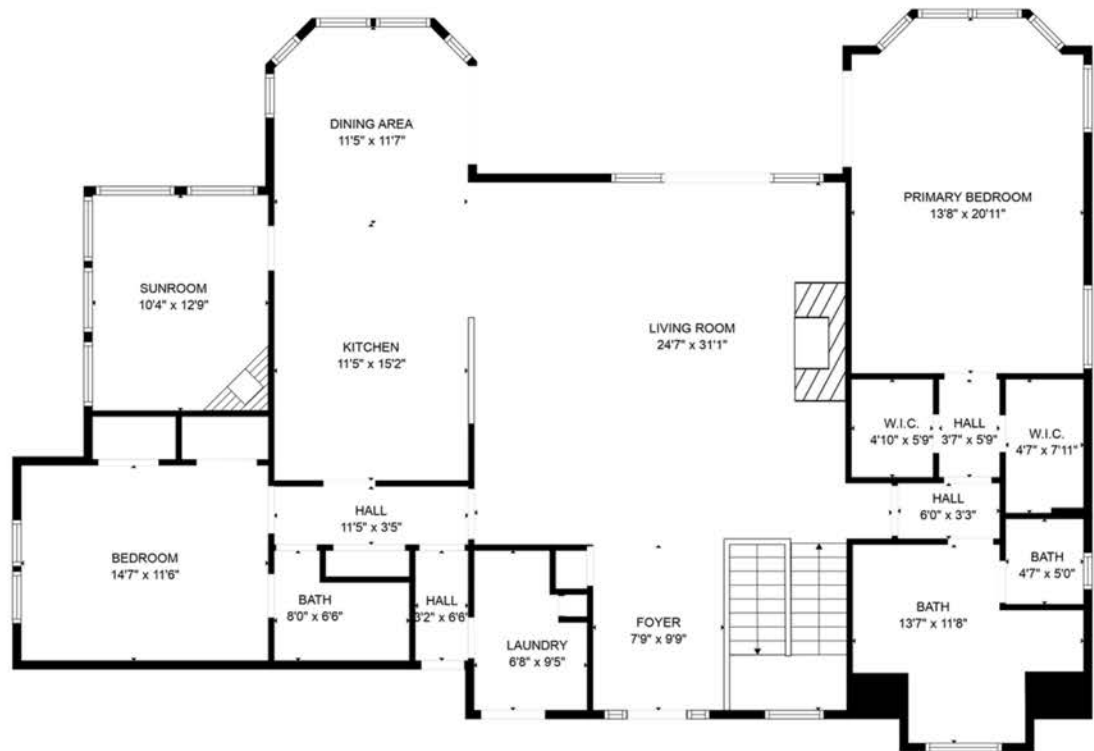
*Club Motorsports is a premiere country club for enthusiasts of vintage and performance cars and motorcycles at the edge of New Hampshire's White Mountains. On hundreds of rolling wooded acres with breathtaking views, we've built a heart-pounding ribbon through the woods: 15 turns over 2.5 miles with an elevation change of 250 feet.*

*Club Motorsports may well be the most dramatic and scenic performance course in the country — a perfect blend of technology, art, and adrenaline. In addition it offers all of the amenities of a private resort: clubhouse with lounge/bar, restaurant, overnight accommodations, plus locker and workout rooms, classrooms, repair shops, secure and climate-controlled garages and private garages, garage-mahal condos, 0.4-mile karting track, and five acres of paddocks for parking and driver training.*

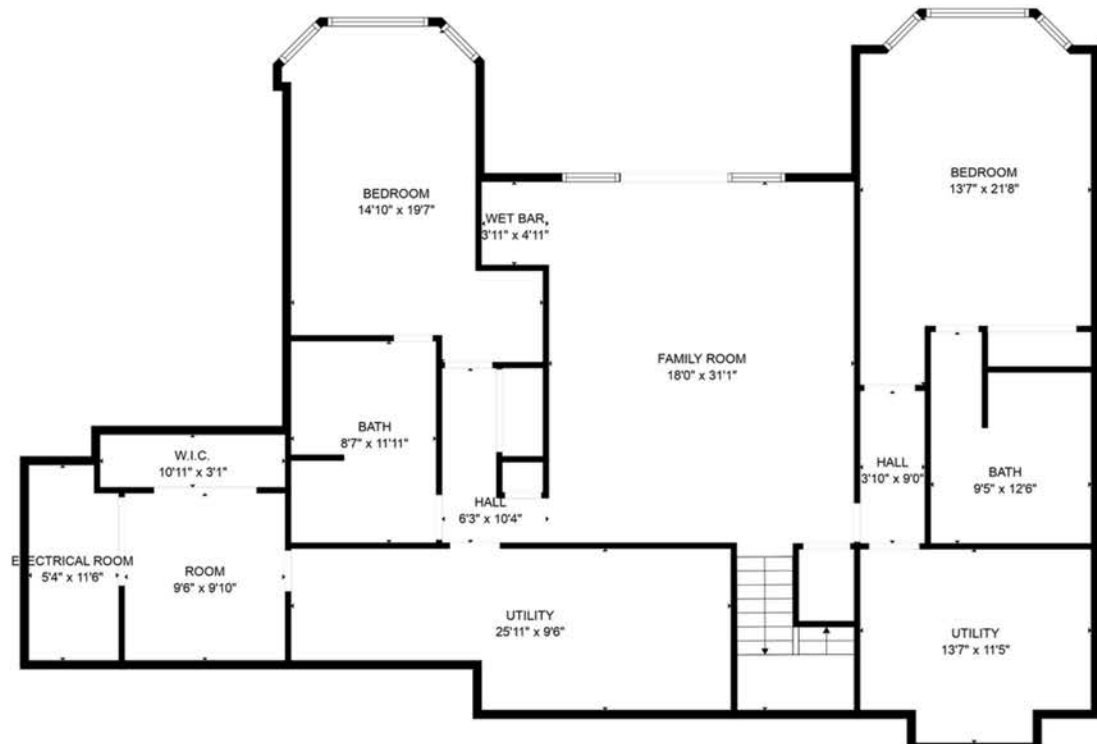


# Floorplan: Main House

## MAIN LEVEL



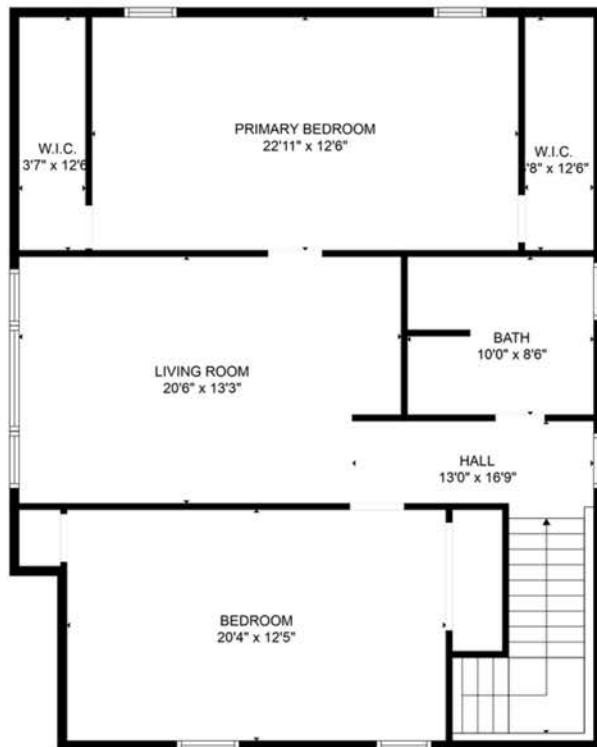
## SECOND LEVEL



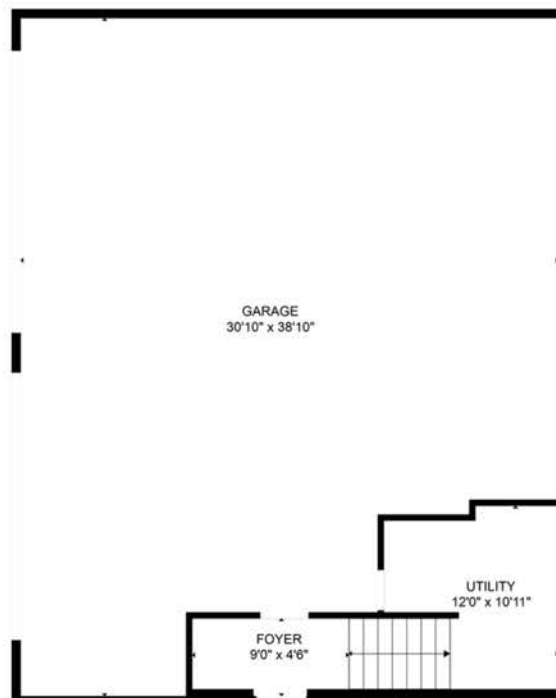


# Floorplan: Guest House

## MAIN LEVEL



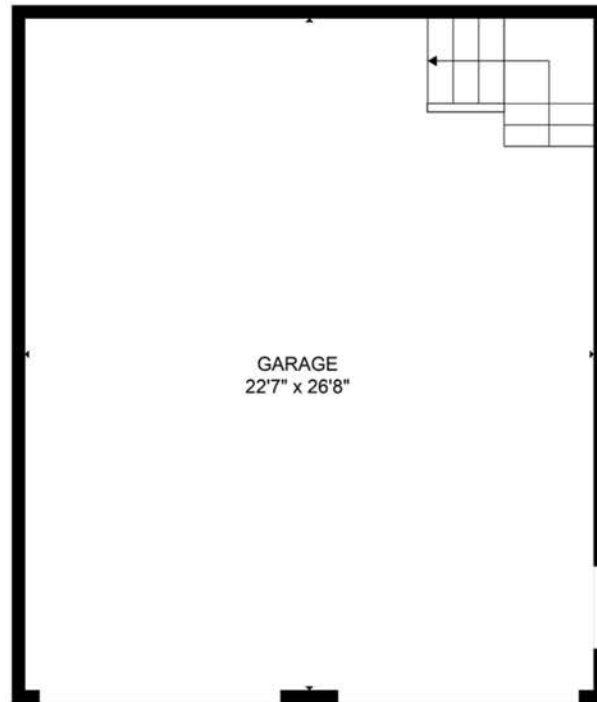
## GARAGE LEVEL



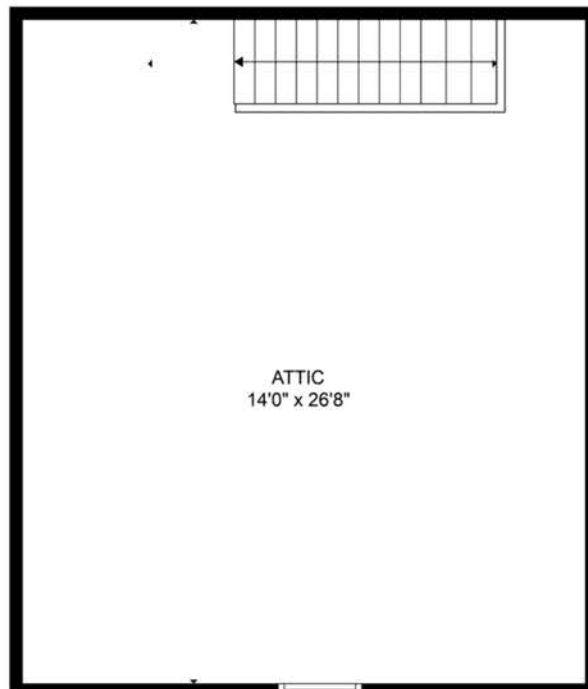


# Floorplan: Garage

GARAGE



ATTIC







FOR SALE

OFFERED AT \$2,500,000

## 10 & 19 Abnaki Lane Moultonborough NH 03254

A private luxury log home estate, located in low-tax Moultonborough, nestled in the foothills of the Ossipee Mountains, on over 8 acres of land. The property consists of two separate lots, each with just over 4 acres of land and three separate buildings.

- ✓ Main log home is raised ranch w/ 1st floor living
- ✓ Open concept kitchen and 3-season porch
- ✓ Detached garage w/ bonus space
- ✓ Guest House w/ 2 bedrooms
- ✓ Oversized garage w/ 2- 16' garage bays
- ✓ Located near Club Motorsports

Broker/agent does not guarantee the accuracy of square-footage, lot size, or other information concerning the condition or features of property provided by the seller or obtained from public records or other sources. Buyers are advised to independently verify the accuracy of all information.



**ADAM DOW**

**The Dow Group**

(866) 525-3946

[adam@thedowgroup.com](mailto:adam@thedowgroup.com)



**SHANNA BEKAR**

**The Dow Group**

(603) 234-4975

[shanna@thedowgroup.com](mailto:shanna@thedowgroup.com)

At the Dow Group, our agents are here to guide you through your real estate process. Whether you're buying, selling, investing, or looking towards luxury properties, the Dow Group is here. Our in-depth knowledge of the local real estate market is unmatched, and our expert ability to deliver results is shown through our hard work and dedication to your satisfaction.

**THEDOWGROUP.COM**

POWERED BY  
**PLACE**

**kw** COASTAL AND  
LAKES & MOUNTAINS  
KELLERWILLIAMS. REALTY